

# Stan 3



32.95 m<sup>2</sup> | Prizemlje | Jednosoban

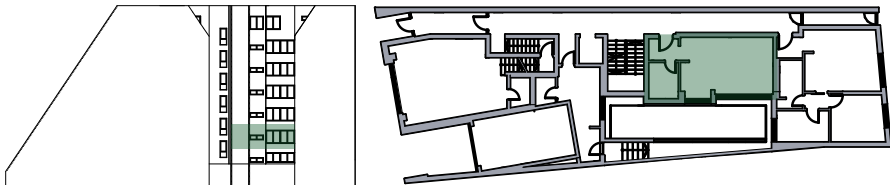
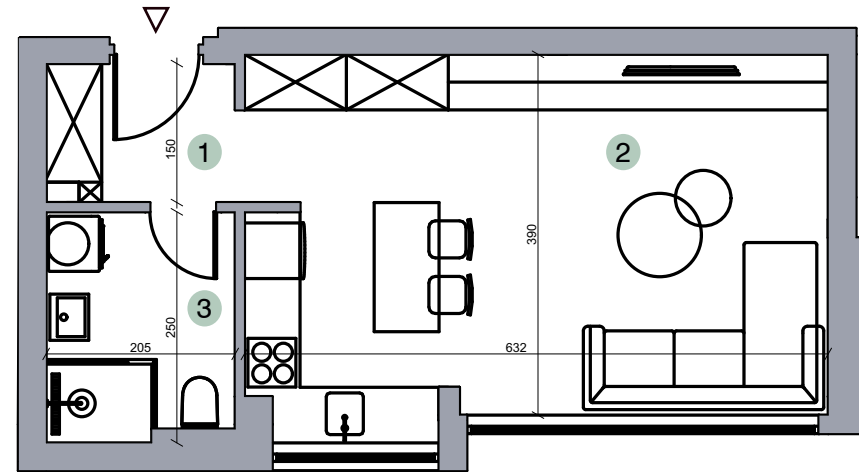


## PROSTORIJA

1. Ulaz, Hodnik
2. Dnevna soba, kuhinja, trpezarija
3. Kupatilo

## POVRŠINA

- 3.10 m<sup>2</sup>  
24.90 m<sup>2</sup>  
4.95 m<sup>2</sup>



Položaj stana u objektu